



Measuring Progress

GREATER MANCHESTER
FIRE AND RESCUE SERVICE



Fire Authority Report
1st April 2011-30th June 2011

Introduction

Performance Indicator Introduction

This report provides a clear measure of progress showing how we are performing in respect of our performance indicators.

All performance indicators are shown by month, to provide a clear picture of how we are performing at any given time. The summary column for each indicator shows how we are performing overall at the end of each reporting period.

Indicators with a target are coded as follows:



Performance is better than target and better than last year



Performance is better than target, but worse than last year



Performance is below target, but better than last year



Performance is below target and worse than last year

Indicators without a target use the arrows to illustrate how current year performance compares to last year.



Performance is better than last year



Performance is the same as last year



Performance is worse than last year

The report begins with a brief description of each performance indicator and a summary of performance across GMFRS, which is then broken down by Borough.

The graphs compare current year performance to the previous year by month and where applicable also compares this years performance to target.

Measuring Progress



GREATER MANCHESTER
FIRE AND RESCUE SERVICE

GMFRS Performance Overview

2011/12 PERFORMANCE INDICATORS FRAMEWORK							Appendix B			
Indicator Description	Previous Yr to Date	Yr to Date	Target to Date	Quarter 1	Quarter 2	Quarter 3	Quarter 4	Trend / Status		
Prevention										
The number of Home Fire Risk Assessments undertaken	23,692	15,763	15,000	15,763						→
The percentage of fires attended in dwellings where:	47.66%	48.08%		48.08%						↑
	19.83%	20.29%		20.29%						→
	32.51%	31.63%	29.08%	31.63%						↑
Number of calls to malicious false alarms Attended	188	158	153	158						↑
False alarms caused by automatic fire detection apparatus	1,630	1,311	1317	1,311						↑
Protection										
Number of Fire Safety Enforcement Inspections	New for 2011/12	2,064	2,295	2,064						
Response										
N149 - Primary Fires	(i) Total	1,747	1,502	1566	1502					↑
	(ii) Fatalities	4	4	0	4					→
	(iii) Injuries	110	112	96	112					↓
N133 - Deliberate Fires	(i) Total	4,915	3,412	4704	3412					↑
	(ii) Primary	734	619	630	619					↑
	(iii) Secondary	4,181	2,793	4074	2793					↑
Number of accidental dwelling fires	602	526	573	526						↑

Measuring Progress



GREATER MANCHESTER
FIRE AND RESCUE SERVICE

GMFRS Performance Overview

	93%	94%	95%	94%	95%	94%						
Percentage of accidental fires in dwellings confined to room of origin						94%						↕
Number of People Rescued from Fires	42	56		56								↕
The number of people in accidental dwelling fires who escape unharmed without FRA assistance	479	517		517								↕
The number of incidents involving hostilities towards fire-fighters	16	14		14								↕
Total number of calls to road traffic accidents	184	185		185								↕
Number of emergencies and life threatening emergencies arrived at within our category response times:	Category 1 - less than 5 minutes		95%		95%							New for 2011/12
	Category 2 - between 5 and 7 minutes				95%							New for 2011/12
	Category 3 - between 7 and 12 minutes	New for 2011/12			95%							New for 2011/12
	Category 4 - between 12 and 17 minutes				95%							New for 2011/12
% of 999 calls answered within 6 seconds	New for 2011/12				98%							New for 2011/12
% of 999 calls processed within agreed times:	45 seconds				75%							New for 2011/12
	60 seconds				85%							New for 2011/12
	90 seconds				90%							New for 2011/12
	120 seconds				98%							New for 2011/12
% of appliances turned out from Wholetime Stations within 60 seconds					100%							New for 2011/12
% of appliances turned out from Retained Stations within 5 minutes					100%							New for 2011/12

Reports are being developed and these measures will be reported in Q2.

Reports are being developed and these measures will be reported in Q2.

Measuring Progress



**GREATER MANCHESTER
FIRE AND RESCUE SERVICE**

GMFRS Performance Overview

Public Value					
Planned in year efficiency savings	New for 2011/12	£5,600,000		Planned efficiency savings in year amount to £5.66 million.	New for 2011/12
To recruit and maintain at least 200 Volunteers to provide 100,000 volunteer hours	(i) Number of Volunteers	203	200	203	New for 2011/12
	(ii) Number of Hours Support	5,685	5502	5,685	New for 2011/12
People					
The proportion of working days/shifts lost due to sickness absence	(ii) All staff	5.84	6.0	5.51	↑
	(i) Whole-time uniformed staff	5.69	6.0	4.32	↑
	(iii) Non-Uniformed Staff	6.93	6.0	9.90	↓
Principles					
The number of working days lost to ill health and injuries	New for 2011/12	79	130	79	New for 2011/12
	Tonnes of Carbon Emitted by fires	3,481	N/A	3,023	↑
The reduction in our overall carbon footprint and use of natural resources	Gas	New for 2011/12	2,781,381	Currently Unavailable	New for 2011/12
	Electric (in kWh)	1,297,443	1,390,169	1,179,759	↑
	F-fuel (in litres)	201,328	176,554	173,984	↑

		Indicator Description	Page Number
Incident	1.0	Number of Primary Fires	1-2
	1.1	Fatalities from Primary Fires and Performance Issue Log	3-5
	1.2	Casualties from Primary Fires	6-7
	1.3	All Deliberate Fires	8-9
	1.4	Deliberate Primary Fires	10-11
	1.5	Deliberate Secondary Fires	12-13
Prevention	1.6	Completed HFRAs	14
	1.7-1.9	The number of fires attended in dwellings where: <ul style="list-style-type: none"> • A smoke alarm had activated • A smoke alarm was fitted but did not active • No smoke alarm was fitted 	15-20
	2.0	Malicious Calls – ATTENDED	21-22
Protection	2.1	Unwanted Fire Signals	23-24
	2.2	Number of Fire Safety Enforcement Inspections	25
Response	2.3	Number of Accidental Dwelling Fires	26-27
	2.4	Percentage of Accidental Dwelling Fires Confined to Room of Origin	28-29
	2.5	Rescues	30-31
	2.6	Escapes Unassisted	32-33
	2.7	Hostilities towards Firefighters	34-35
	2.8	Road Traffic Collisions	36-37
	2.9	% of emergencies arrived at within our category response times	38
	3.0	% of 999 calls answered within 6 seconds	38
	3.1	% of 999 calls processed within agreed times	38
	3.2	% of appliances turned out within agreed times	38
People	3.3	The proportion of working days/shifts lost due to sickness absence	39
	3.4	The number of Volunteers and Volunteer Hours	39
Principles	3.5	The number of working days lost due to ill health and injuries	40
	3.6	Our carbon footprint and use of natural resources	40

Incidents

1.0 Primary Fires

These are reportable fires, such as those listed below*, or any fires involving Fatalities, Casualties, Rescues, or fires attended by five or more appliances. An appliance is counted if either the appliance, equipment from it, or personnel riding on it, were used to fight the fire.

*Buildings, Caravans, Trailers, etc. Vehicles and other methods of transport (not derelict), Outdoor storage, Plant and Machinery, Agricultural and Forestry premises and property, other outdoor structures including post boxes, tunnels, bridges, etc.

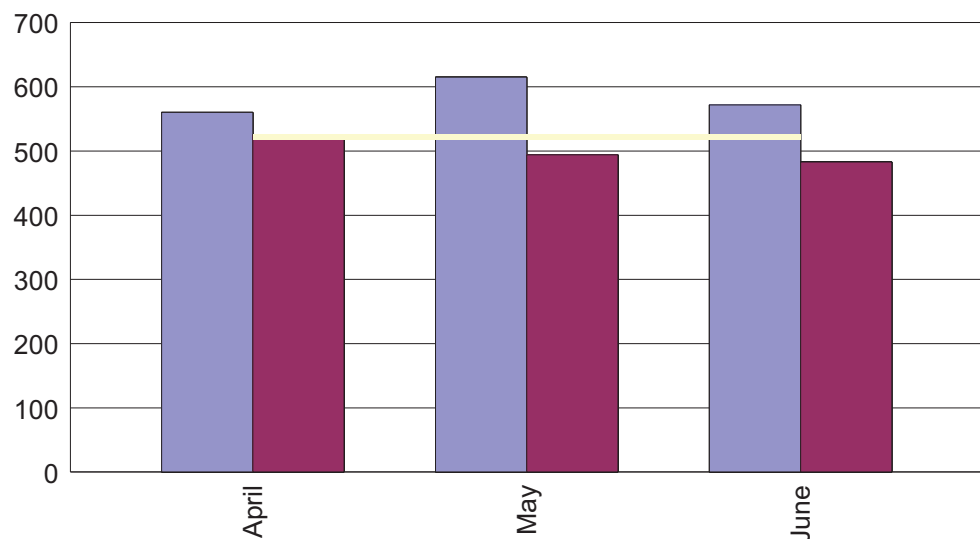
Buildings are classed as:

All buildings including those under construction, but excluding derelict buildings or those under demolition.

From April 2011 to 30th June 2011

Month	Prev Yr To Date	Curr Yr To Date	Difference to Previous Yr	Target	Difference to Target	% of Target Achieved	Direction
April	560	525	-35	522	3	99.43%	▲
May	615	494	-121	522	-28	105.67%	▲
June	572	483	-89	522	-39	108.07%	▲
Grand Total	1747	1502	-245	1566	-64	104.26%	▲

■ Previous Year
■ Current Year
■ Current Yr Target



Comments

Targeted HFRA approach continues as the majority of these fires occur in the target wards. Incidents are regularly reviewed by watch officers with preventative work including: HFRA's in target areas, Offender management, NPT partnership working, Vulnerable persons register. The Corporate HFRA strategy is to target these areas and the reduction will continue to be subject of monitoring particularly if a continuing trend of elderly people involved is identified and intervention in those groups is required.



Incidents

1.0 Primary Fires

From April 2011 to 30th June 2011

Borough	Qtr	Month	Prev Yr To Date	Curr Yr To Date	Difference to Previous Yr	Target	Difference to Target	% of Target Achieved	Direction
BOLTON	1	April	55	65	10	63	2	96.92%	▼
		May	97	54	-43	63	-9	116.67%	▲
		June	60	62	2	63	-1	101.61%	▼
Summary of BOLTON			212	181	-31	189	-8	104.42%	▲
BURY	1	April	32	25	-7	35	-10	140.00%	▲
		May	39	26	-13	35	-9	134.62%	▲
		June	50	32	-18	35	-3	109.38%	▲
Summary of BURY			121	83	-38	105	-22	126.51%	▲
MANCHESTER	1	April	117	120	3	109	11	90.83%	▼
		May	131	123	-8	109	14	88.62%	▲
		June	117	124	7	109	15	87.90%	▼
Summary of MANCHESTER			365	367	2	327	40	89.10%	▼
OLDHAM	1	April	78	57	-21	55	2	96.49%	▲
		May	53	41	-12	55	-14	134.15%	▲
		June	52	36	-16	55	-19	152.78%	▲
Summary of OLDHAM			183	134	-49	165	-31	123.13%	▲
ROCHDALE	1	April	60	40	-20	54	-14	135.00%	▲
		May	54	40	-14	54	-14	135.00%	▲
		June	65	41	-24	54	-13	131.71%	▲
Summary of ROCHDALE			179	121	-58	162	-41	133.88%	▲
SALFORD	1	April	56	56	0	57	-1	101.79%	◀▶
		May	77	57	-20	57	0	100.00%	▲
		June	56	42	-14	57	-15	135.71%	▲
Summary of SALFORD			189	155	-34	171	-16	110.32%	▲
STOCKPORT	1	April	44	39	-5	37	2	94.87%	▲
		May	45	37	-8	37	0	100.00%	▲
		June	35	36	1	37	-1	102.78%	▼
Summary of STOCKPORT			124	112	-12	111	1	99.11%	▲
TAMESIDE	1	April	43	33	-10	39	-6	118.18%	▲
		May	37	35	-2	39	-4	111.43%	▲
		June	50	26	-24	39	-13	150.00%	▲
Summary of TAMESIDE			130	94	-36	117	-23	124.47%	▲
TRAFFORD	1	April	25	31	6	25	6	80.65%	▼
		May	30	21	-9	25	-4	119.05%	▲
		June	30	29	-1	25	4	86.21%	▲
Summary of TRAFFORD			85	81	-4	75	6	92.59%	▲
WIGAN	1	April	50	59	9	48	11	81.36%	▼
		May	52	60	8	48	12	80.00%	▼
		June	57	55	-2	48	7	87.27%	▲
Summary of WIGAN			159	174	15	144	30	82.76%	▼
Grand Total			1747	1502	-245	1566	-64	104.26%	▲



Incidents

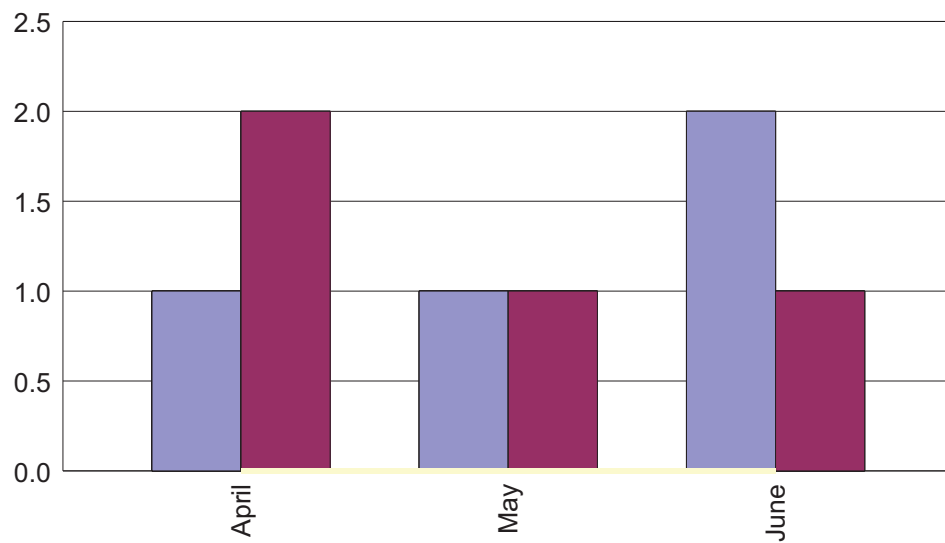
1.1 Fatalities from Primary Fires

The number of deaths occurring as a result of Primary Fires. This indicator includes all incidents where the Coroner has recorded fire as the cause of death.

From April 2011 to 30th June 2011

Month	Prev Yr To Date	Curr Yr To Date	Difference to Previous Yr	Direction
April	1	2	1	▼
May	1	1	0	◄►
June	2	1	-1	▲
Grand Total	4	4	0	◄►

Previous Year
 Current Year
 Current Yr Target



Comments

Please refer to the Performance Issue Log for a summary of Quarter 1 performance.

Incidents

1.1 Fatalities from Primary Fires

Performance Issue Log

Performance Indicator: Fatalities from Primary Fires

Nature of Problem:

The number of deaths from Primary fires in Q1 2010/11 is repeated in Q1 2011/12.

Analysis:

Tragically there were 4 deaths from fire in this quarter:

- 3 being classed as accidental and 1 being suicide
- 3 were men
- Their ages ranged from 42 to 66
- 2 occurred in Manchester, 1 in Trafford and 1 in Rochdale
- 3 died in terraced houses and 1 in a commercial property
- 2 were found in the lounge and 1 in the front room
- 2 out of the 3 who died in a domestic premise had a working smoke alarm, however they did not activate.
- 3 were found between 13:51 and 18:27, with 1 being a late fire call
- Influencing factors include, mental health, visually impairment and limited mobility.

Action taken:

Further analysis is being undertaken by the Fire Investigation Department to establish any learning from these tragic incidents and will be used in conjunction with the findings within the 'Learning from Fatal Fire Incidents' report. This report provides information for the Authority in relation to fire fatalities within Greater Manchester during the period 2007/08 - 2010/11.

Expected Outcomes:

Further progress to achieving the Fire Authority goal of nil fire deaths.



Incidents

1.1 Fatalities from Primary Fires

From April 2011 to 30th June 2011

Borough	Qtr	Month	Prev Yr To Date	Curr Yr To Date	Difference to Previous Yr	Direction
BOLTON	1	April	0	0	0	◀▶
		May	1	0	-1	▲
		June	0	0	0	◀▶
Summary of BOLTON			1	0	-1	▲
BURY	1	April	0	0	0	◀▶
		May	0	0	0	◀▶
		June	0	0	0	◀▶
Summary of BURY			0	0	0	◀▶
MANCHESTER	1	April	1	1	0	◀▶
		May	0	0	0	◀▶
		June	1	1	0	◀▶
Summary of MANCHESTER			2	2	0	◀▶
OLDHAM	1	April	0	0	0	◀▶
		May	0	0	0	◀▶
		June	0	0	0	◀▶
Summary of OLDHAM			0	0	0	◀▶
ROCHDALE	1	April	0	0	0	◀▶
		May	0	1	1	▼
		June	0	0	0	◀▶
Summary of ROCHDALE			0	1	1	▼
SALFORD	1	April	0	0	0	◀▶
		May	0	0	0	◀▶
		June	0	0	0	◀▶
Summary of SALFORD			0	0	0	◀▶
STOCKPORT	1	April	0	0	0	◀▶
		May	0	0	0	◀▶
		June	1	0	-1	▲
Summary of STOCKPORT			1	0	-1	▲
TAMESIDE	1	April	0	0	0	◀▶
		May	0	0	0	◀▶
		June	0	0	0	◀▶
Summary of TAMESIDE			0	0	0	◀▶
TRAFFORD	1	April	0	1	1	▼
		May	0	0	0	◀▶
		June	0	0	0	◀▶
Summary of TRAFFORD			0	1	1	▼
WIGAN	1	April	0	0	0	◀▶
		May	0	0	0	◀▶
		June	0	0	0	◀▶
Summary of WIGAN			0	0	0	◀▶
Grand Total			4	4	0	◀▶

Incidents

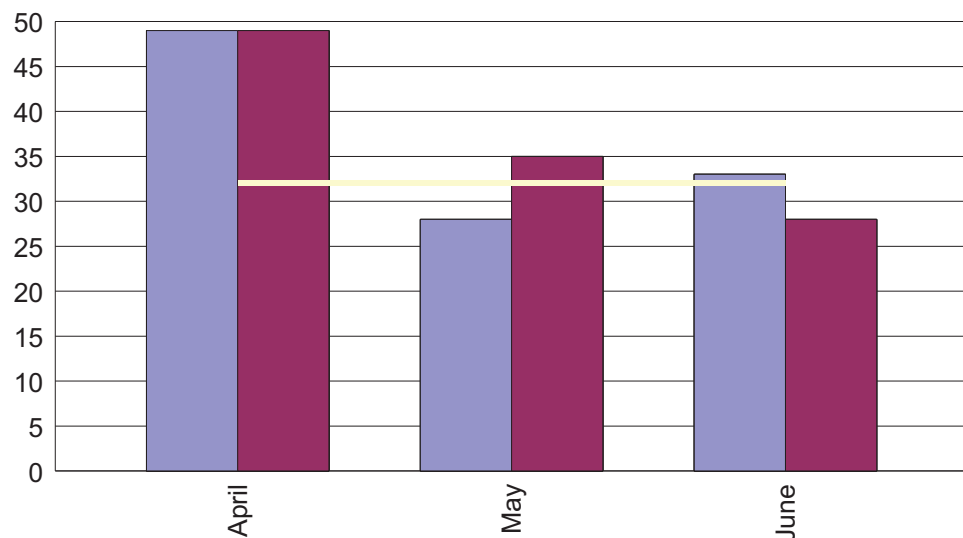
1.2 Casualties from Primary Fires

The number of non-fatal casualties occurring as a result of Primary Fires. This indicator excludes Precautionary Checks and First Aid given at the scene of the incident.

From April 2011 to 30th June 2011

Month	Prev Yr To Date	Curr Yr To Date	Difference to Previous Yr	Target	Difference to Target	% of Target Achieved	Direction
April	49	49	0	32	17	65.31%	↔
May	28	35	7	32	3	91.43%	▼
June	33	28	-5	32	-4	114.29%	▲
Grand Total	110	112	2	96	16	85.71%	▼

■ Previous Year
■ Current Year
■ Current Yr Target



Comments

GMFRS continues to provide Fire Safety home education, whilst also working with Salford city radio, carers, social services and domestic violence unit. HFRA implementation plan devised and delivered as a rolling programme to Watches. Large scale incidents continue to be responsible for multiple casualties. (gas explosion and cooking related). All stations/watches now run targeted mini HFRA sweeps. These are further supported by programmed visits to schools, sheltered housing etc. All presentations and HFRA's concentrate on cooking. Continue with the boroughs HFRA strategy. Positive outcome indicates that HFRA Escape plan is pitched at appropriate level & community understands information in relation to escape plan.



Incidents

1.2 Casualties from Primary Fires

From April 2011 to 30th June 2011

Borough	Qtr	Month	Prev Yr To Date	Curr Yr To Date	Difference to Previous Yr	Target	Difference to Target	% of Target Achieved	Direction
BOLTON	1	April	5	4	-1	4	0	100.00%	▲
		May	6	2	-4	4	-2	200.00%	▲
		June	1	4	3	4	0	100.00%	▼
Summary of BOLTON			12	10	-2	12	-2	120.00%	▲
BURY	1	April	1	0	-1	2	-2		▲
		May	0	1	1	2	-1	200.00%	▼
		June	5	2	-3	2	0	100.00%	▲
Summary of BURY			6	3	-3	6	-3	200.00%	▲
MANCHESTER	1	April	11	13	2	6	7	46.15%	▼
		May	9	7	-2	6	1	85.71%	▲
		June	1	8	7	6	2	75.00%	▼
Summary of MANCHESTER			21	28	7	18	10	64.29%	▼
OLDHAM	1	April	4	7	3	4	3	57.14%	▼
		May	1	2	1	4	-2	200.00%	▼
		June	8	1	-7	4	-3	400.00%	▲
Summary of OLDHAM			13	10	-3	12	-2	120.00%	▲
ROCHDALE	1	April	6	1	-5	4	-3	400.00%	▲
		May	3	8	5	4	4	50.00%	▼
		June	6	2	-4	4	-2	200.00%	▲
Summary of ROCHDALE			15	11	-4	12	-1	109.09%	▲
SALFORD	1	April	3	7	4	3	4	42.86%	▼
		May	1	3	2	3	0	100.00%	▼
		June	5	3	-2	3	0	100.00%	▲
Summary of SALFORD			9	13	4	9	4	69.23%	▼
STOCKPORT	1	April	3	4	1	3	1	75.00%	▼
		May	4	2	-2	3	-1	150.00%	▲
		June	4	4	0	3	1	75.00%	◀▶
Summary of STOCKPORT			11	10	-1	9	1	90.00%	▲
TAMESIDE	1	April	12	5	-7	4	1	80.00%	▲
		May	2	5	3	4	1	80.00%	▼
		June	1	1	0	4	-3	400.00%	◀▶
Summary of TAMESIDE			15	11	-4	12	-1	109.09%	▲
TRAFFORD	1	April	3	2	-1	1	1	50.00%	▲
		May	1	2	1	1	1	50.00%	▼
		June	0	2	2	1	1	50.00%	▼
Summary of TRAFFORD			4	6	2	3	3	50.00%	▼
WIGAN	1	April	1	6	5	1	5	16.67%	▼
		May	1	3	2	1	2	33.33%	▼
		June	2	1	-1	1	0	100.00%	▲
Summary of WIGAN			4	10	6	3	7	30.00%	▼
Grand Total			110	112	2	96	16	85.71%	▼



Incidents

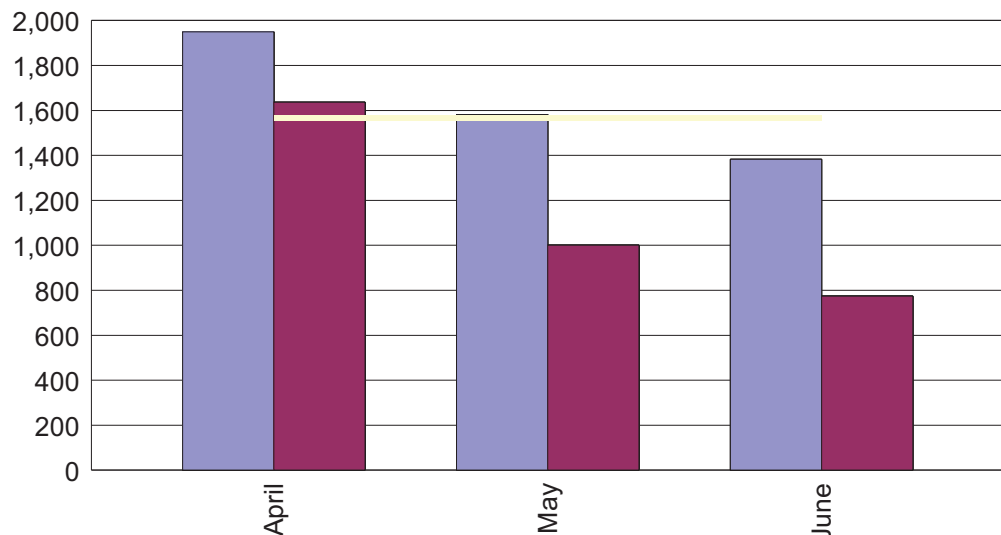
1.3 All Deliberate Fires

The number of fires where the suspected cause is neither 'Accidental' or 'Not Known'. In terms of how a fire is recorded, a deliberate fire is one with a cause that is 'deliberate', 'malicious', or 'doubtful'.

From April 2011 to 30th June 2011

Month	Prev Yr To Date	Curr Yr To Date	Difference to Previous Yr	Target	Difference to Target	% of Target Achieved	Direction
April	1950	1637	-313	1568	69	95.78%	▲
May	1582	1001	-581	1568	-567	156.64%	▲
June	1383	774	-609	1568	-794	202.58%	▲
Grand Total	4915	3412	-1503	4704	-1292	137.87%	▲

■ Previous Year
■ Current Year
■ Current Yr Target



Comments

Work undertaken by local analytical team to identify hotspots with increased patrols by CFS Staff, PCSO'S, Volunteers. Use of Bluetooth to distribute safety messages at events. Use of arson patrol bikes with initiatives such as BSafeBCool interventions in schools to engage with CYP to reduce the number of Secondary Fires attended across Borough showing success, as is the ROC café at Bury to engage with CYP to address anti-social behaviour and deliberate fire starting.



Incidents

1.3 All Deliberate Fires

From April 2011 to 30th June 2011

Borough	Qtr	Month	Prev Yr To Date	Curr Yr To Date	Difference to Previous Yr	Target	Difference to Target	% of Target Achieved	Direction
BOLTON	1	April	234	204	-30	192	12	94.12%	▲
		May	209	105	-104	192	-87	182.86%	▲
		June	159	79	-80	192	-113	243.04%	▲
Summary of BOLTON			602	388	-214	576	-188	148.45%	▲
BURY	1	April	81	77	-4	71	6	92.21%	▲
		May	83	55	-28	71	-16	129.09%	▲
		June	64	35	-29	71	-36	202.86%	▲
Summary of BURY			228	167	-61	213	-46	127.54%	▲
MANCHESTER	1	April	337	280	-57	281	-1	100.36%	▲
		May	274	191	-83	281	-90	147.12%	▲
		June	269	166	-103	281	-115	169.28%	▲
Summary of MANCHESTER			880	637	-243	843	-206	132.34%	▲
OLDHAM	1	April	287	211	-76	204	7	96.68%	▲
		May	211	119	-92	204	-85	171.43%	▲
		June	140	76	-64	204	-128	268.42%	▲
Summary of OLDHAM			638	406	-232	612	-206	150.74%	▲
ROCHDALE	1	April	196	160	-36	158	2	98.75%	▲
		May	152	105	-47	158	-53	150.48%	▲
		June	148	89	-59	158	-69	177.53%	▲
Summary of ROCHDALE			496	354	-142	474	-120	133.90%	▲
SALFORD	1	April	168	155	-13	145	10	93.55%	▲
		May	157	106	-51	145	-39	136.79%	▲
		June	130	69	-61	145	-76	210.14%	▲
Summary of SALFORD			455	330	-125	435	-105	131.82%	▲
STOCKPORT	1	April	116	102	-14	107	-5	104.90%	▲
		May	107	71	-36	107	-36	150.70%	▲
		June	111	67	-44	107	-40	159.70%	▲
Summary of STOCKPORT			334	240	-94	321	-81	133.75%	▲
TAMESIDE	1	April	153	137	-16	113	24	82.48%	▲
		May	109	68	-41	113	-45	166.18%	▲
		June	93	54	-39	113	-59	209.26%	▲
Summary of TAMESIDE			355	259	-96	339	-80	130.89%	▲
TRAFFORD	1	April	78	68	-10	68	0	100.00%	▲
		May	61	50	-11	68	-18	136.00%	▲
		June	74	31	-43	68	-37	219.35%	▲
Summary of TRAFFORD			213	149	-64	204	-55	136.91%	▲
WIGAN	1	April	300	243	-57	229	14	94.24%	▲
		May	219	131	-88	229	-98	174.81%	▲
		June	195	108	-87	229	-121	212.04%	▲
Summary of WIGAN			714	482	-232	687	-205	142.53%	▲
Grand Total			4915	3412	-1503	4704	-1292	137.87%	▲



Incidents

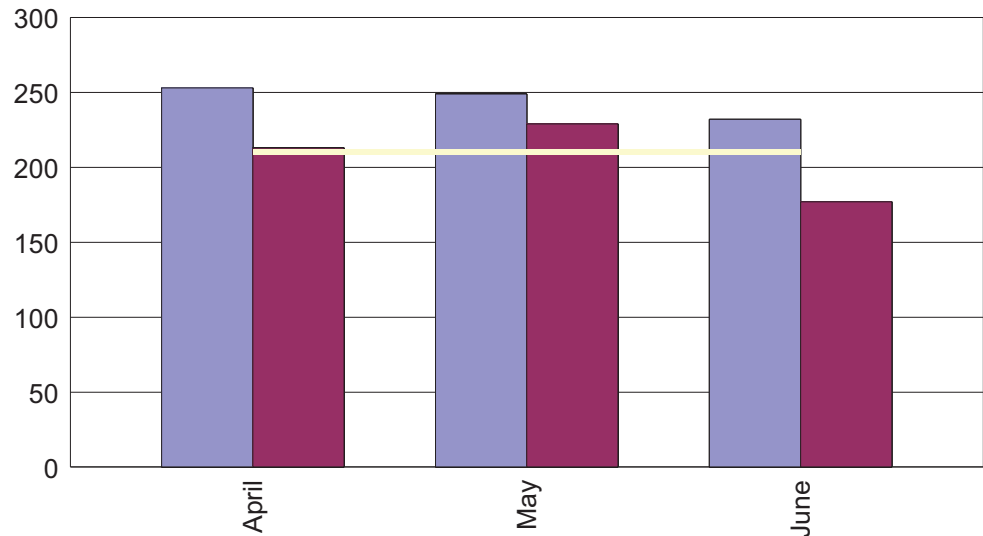
1.4 Deliberate Primary Fires

The number of Primary Fires where the suspected cause is neither 'Accidental' or 'Not Known'. In terms of how a fire is recorded, a deliberate fire is one with a cause that is 'deliberate', 'malicious', or 'doubtful'.

From April 2011 to 30th June 2011

Month	Prev Yr To Date	Curr Yr To Date	Difference to Previous Yr	Target	Difference to Target	% of Target Achieved	Direction
April	253	213	-40	210	3	98.59%	▲
May	249	229	-20	210	19	91.70%	▲
June	232	177	-55	210	-33	118.64%	▲
Grand Total	734	619	-115	630	-11	101.78%	▲

Previous Year
 Current Year
 Current Yr Target



Comments

Police action and intervention last year dealt with a number of issues that have prevented reoccurrence this year. There is continued proactive work by crews and utilisation of partners through the LTM forum. Other actions include having an agency contact list as part of the PMS lets WM contact partner at the earliest opportunity, but also Arson vulnerability Assessments of commercial properties and Arson vulnerability Assessments of Domestic properties as part of HFRA.



Incidents

1.4 Deliberate Primary

From April 2011 to 30th June 2011

Borough	Qtr	Month	Prev Yr To Date	Curr Yr To Date	Difference to Previous Yr	Target	Difference to Target	% of Target Achieved	Direction
BOLTON	1	April	28	23	-5	24	-1	104.35%	▲
		May	31	24	-7	24	0	100.00%	▲
		June	25	20	-5	24	-4	120.00%	▲
Summary of BOLTON			84	67	-17	72	-5	107.46%	▲
BURY	1	April	7	7	0	11	-4	157.14%	◀▶
		May	16	14	-2	11	3	78.57%	▲
		June	17	18	1	11	7	61.11%	▼
Summary of BURY			40	39	-1	33	6	84.62%	▲
MANCHESTER	1	April	44	52	8	38	14	73.08%	▼
		May	44	53	9	38	15	71.70%	▼
		June	44	38	-6	38	0	100.00%	▲
Summary of MANCHESTER			132	143	11	114	29	79.72%	▼
OLDHAM	1	April	49	28	-21	30	-2	107.14%	▲
		May	31	27	-4	30	-3	111.11%	▲
		June	24	18	-6	30	-12	166.67%	▲
Summary of OLDHAM			104	73	-31	90	-17	123.29%	▲
ROCHDALE	1	April	29	16	-13	25	-9	156.25%	▲
		May	30	19	-11	25	-6	131.58%	▲
		June	28	15	-13	25	-10	166.67%	▲
Summary of ROCHDALE			87	50	-37	75	-25	150.00%	▲
SALFORD	1	April	23	29	6	25	4	86.21%	▼
		May	38	29	-9	25	4	86.21%	▲
		June	25	13	-12	25	-12	192.31%	▲
Summary of SALFORD			86	71	-15	75	-4	105.63%	▲
STOCKPORT	1	April	18	10	-8	14	-4	140.00%	▲
		May	16	12	-4	14	-2	116.67%	▲
		June	14	10	-4	14	-4	140.00%	▲
Summary of STOCKPORT			48	32	-16	42	-10	131.25%	▲
TAMESIDE	1	April	22	13	-9	15	-2	115.38%	▲
		May	12	16	4	15	1	93.75%	▼
		June	20	12	-8	15	-3	125.00%	▲
Summary of TAMESIDE			54	41	-13	45	-4	109.76%	▲
TRAFFORD	1	April	10	8	-2	7	1	87.50%	▲
		May	8	5	-3	7	-2	140.00%	▲
		June	7	4	-3	7	-3	175.00%	▲
Summary of TRAFFORD			25	17	-8	21	-4	123.53%	▲
WIGAN	1	April	23	27	4	21	6	77.78%	▼
		May	23	30	7	21	9	70.00%	▼
		June	28	29	1	21	8	72.41%	▼
Summary of WIGAN			74	86	12	63	23	73.26%	▼
Grand Total			734	619	-115	630	-11	101.78%	▲



Incidents

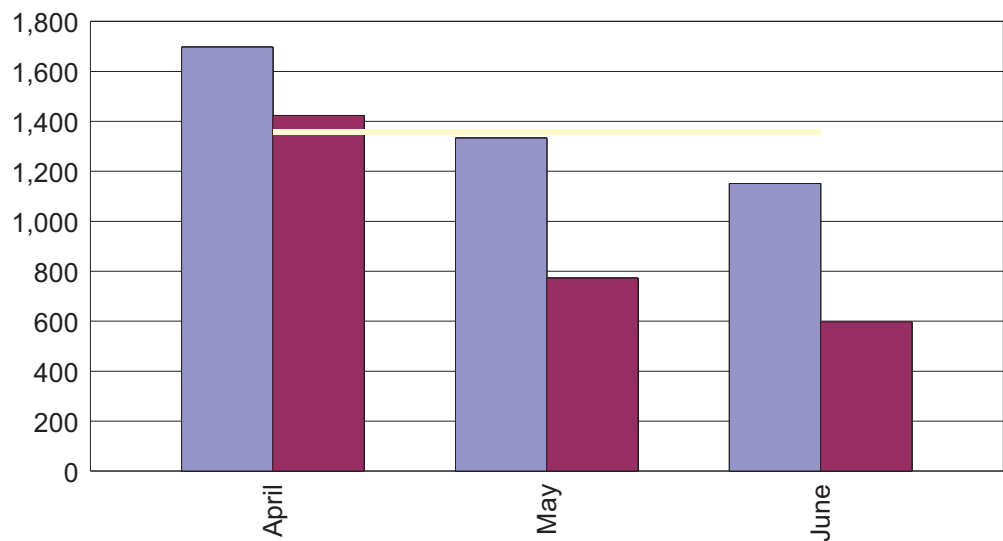
1.5 Deliberate Secondary Fires

The number of Secondary Fires where the suspected cause is neither 'Accidental' or 'Not Known'. In terms of how a fire is recorded, a deliberate fire is one with a cause that is 'deliberate', 'malicious', or 'doubtful'.

From April 2011 to 30th June 2011

Month	Prev Yr To Date	Curr Yr To Date	Difference to Previous Yr	Target	Difference to Target	% of Target Achieved	Direction
April	1697	1424	-273	1358	66	95.37%	▲
May	1333	772	-561	1358	-586	175.91%	▲
June	1151	597	-554	1358	-761	227.47%	▲
Grand Total	4181	2793	-1388	4074	-1281	145.86%	▲

■ Previous Year
■ Current Year
■ Current Yr Target



Comments

Work continues with existing initiatives, schools and college visits and working with partners to implement new refuse and recycling as part of the wider sustainability agenda. Work undertaken by local analytical team to identify hotspots. Increased patrols by CFS Staff, PCSO'S, Volunteers. Use of Bluetooth to distribute safety messages at events. Potential for risk in this area due to the large reduction from MCC in the street environment teams. BSafeBCool interventions in schools to engage with CYP to reduce the number of Secondary Fires, ROC café at Bury to engage with CYP to address anti-social behaviour & deliberate fire starting. Watches are utilising the skip safe scheme and have shown notable success. Mapping of the last 12 months activity has taken place and have seen that that correlates with ASB and open land. The maps have been sent to Environmental Services for use in targeting their resources. Wigan recently implemented a scheme similar to other boroughs whereby residents would be notified and face fines for leaving refuse bins out following collection. This scheme has been removed following directive from DCLG to LA's. Local partnership boards and closer work with Trafford council have yielded results in quickly addressing potential issues, these include 6 youth apprehended in Broadheath and the council boarding up and providing security to an unoccupied APH within 24 hours. Trafford Council have approved a £30k bid to run 10 FireFly courses in Trafford in support of this work.



Incidents

1.5 Deliberate Secondary Fires

From April 2011 to 30th June 2011

Borough	Qtr	Month	Prev Yr To Date	Curr Yr To Date	Difference to Previous Yr	Target	Difference to Target	% of Target Achieved	Direction
BOLTON	1	April	206	181	-25	168	13	92.82%	▲
		May	178	81	-97	168	-87	207.41%	▲
		June	134	59	-75	168	-109	284.75%	▲
Summary of BOLTON			518	321	-197	504	-183	157.01%	▲
BURY	1	April	74	70	-4	60	10	85.71%	▲
		May	67	41	-26	60	-19	146.34%	▲
		June	47	17	-30	60	-43	352.94%	▲
Summary of BURY			188	128	-60	180	-52	140.63%	▲
MANCHESTER	1	April	293	228	-65	243	-15	106.58%	▲
		May	230	138	-92	243	-105	176.09%	▲
		June	225	128	-97	243	-115	189.84%	▲
Summary of MANCHESTER			748	494	-254	729	-235	147.57%	▲
OLDHAM	1	April	238	183	-55	174	9	95.08%	▲
		May	180	92	-88	174	-82	189.13%	▲
		June	116	58	-58	174	-116	300.00%	▲
Summary of OLDHAM			534	333	-201	522	-189	156.76%	▲
ROCHDALE	1	April	167	144	-23	133	11	92.36%	▲
		May	122	86	-36	133	-47	154.65%	▲
		June	120	74	-46	133	-59	179.73%	▲
Summary of ROCHDALE			409	304	-105	399	-95	131.25%	▲
SALFORD	1	April	145	126	-19	120	6	95.24%	▲
		May	119	77	-42	120	-43	155.84%	▲
		June	105	56	-49	120	-64	214.29%	▲
Summary of SALFORD			369	259	-110	360	-101	139.00%	▲
STOCKPORT	1	April	98	92	-6	93	-1	101.09%	▲
		May	91	59	-32	93	-34	157.63%	▲
		June	97	57	-40	93	-36	163.16%	▲
Summary of STOCKPORT			286	208	-78	279	-71	134.13%	▲
TAMESIDE	1	April	131	124	-7	98	26	79.03%	▲
		May	97	52	-45	98	-46	188.46%	▲
		June	73	42	-31	98	-56	233.33%	▲
Summary of TAMESIDE			301	218	-83	294	-76	134.86%	▲
TRAFFORD	1	April	68	60	-8	61	-1	101.67%	▲
		May	53	45	-8	61	-16	135.56%	▲
		June	67	27	-40	61	-34	225.93%	▲
Summary of TRAFFORD			188	132	-56	183	-51	138.64%	▲
WIGAN	1	April	277	216	-61	208	8	96.30%	▲
		May	196	101	-95	208	-107	205.94%	▲
		June	167	79	-88	208	-129	263.29%	▲
Summary of WIGAN			640	396	-244	624	-228	157.58%	▲
Grand Total			4181	2793	-1388	4074	-1281	145.86%	▲

Prevention

1.6 Completed HFRA's

The number of Home Fire Risk Assessments undertaken by Ops personnel, CFS Staff, Partners and Volunteers.

Data from April 2011 to 30th June 2011

Completed Home Fire Risk Assessments

Borough	OPS	CFS	Other FS	Partner	Total Number of Completed HFRA's	Target	% of Target Achieved
Bolton	1118	5	370	0	1493	1429	104.48%
Bury	587	6	0	4	597	1069	55.85%
Manchester	2549	31	26	7	2613	2661	98.20%
Oldham	1545	2	0	364	1911	1317	145.10%
Rochdale	1288	22	0	23	1333	1156	115.31%
Salford	1392	7	29	24	1452	1727	84.08%
Stockport	870	2	1	14	887	1383	64.14%
Tameside	1063	0	0	1060	2123	1472	144.23%
Trafford	1656	0	18	0	1674	1281	130.68%
Wigan	1506	43	58	0	1607	1505	106.78%
Unknown	55	2	2	14	73		
Grand Total	13629	120	504	1510	15763	15000	105.09%

Comments

Rochdale Borough operates a policy of each watch undertaking a Day of Action per 7 tours based upon targeting of specific wards/SOA's as per Mosaic analysis of deprivation and fire related data. These Days of Action are often in conjunction with partner agencies thereby delivering other services at the same time as HFRA's. In addition, specific targeting of vulnerable persons is done in partnership with the HIA, Adult Safeguarding Services, Children's Safeguarding Services etc thus ensuring equality of service delivery and a risk based approach in line with the Service's Risk Model. The weekend campaigns continue to work for Trafford, although the success is generating large numbers of extra referrals which need to be accommodated out side of these campaigns.



Prevention

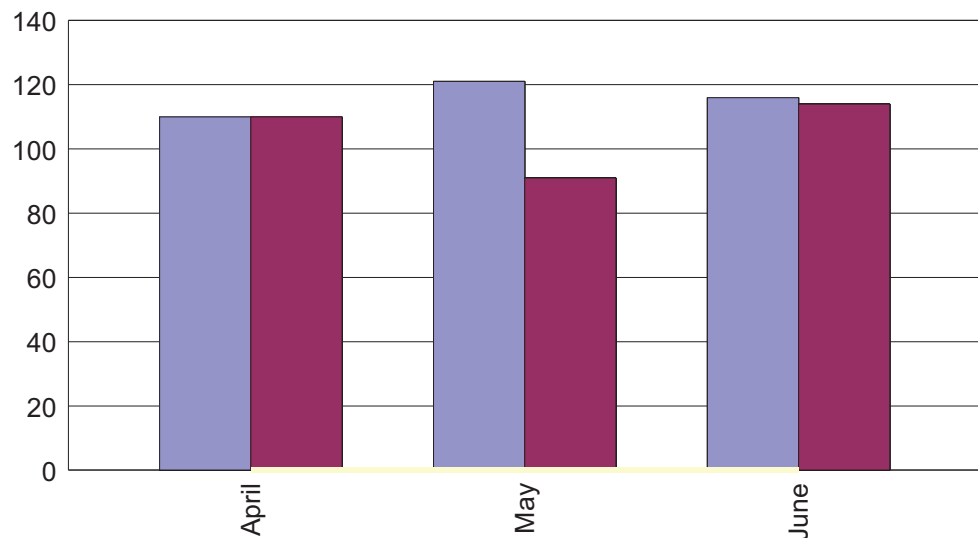
1.7 Smoke Alarms - Fitted and Activated

The number fires attended in dwellings where a smoke alarms was fitted and activated.

From April 2011 to 30th June 2011

Month	Prev Yr To Date	Curr Yr To Date	Difference to Previous Yr	Direction
April	110	110	0	◀▶
May	121	91	-30	▼
June	116	114	-2	▼
Grand Total	347	315	-32	▼

■ Previous Year
■ Current Year
■ Current Yr Target



Comments

Continuous monitoring required, with continuation of HFRA strategy but more targeted within vulnerable localities. The improvements in this measure demonstrate the success of the HFRA campaign, although there needs to be increased education in these areas in order to try to prevent the incident before the alarm is needed.



Prevention

1.7 Smoke Alarms - Fitted and Activated

From April 2011 to 30th June 2011

Borough	Qtr	Month	Prev Yr To Date	Curr Yr To Date	Difference to Previous Yr	Direction
BOLTON	1	April	7	14	7	▲
		May	16	13	-3	▼
		June	10	15	5	▲
Summary of BOLTON			33	42	9	▲
BURY	1	April	9	6	-3	▼
		May	10	2	-8	▼
		June	9	2	-7	▼
Summary of BURY			28	10	-18	▼
MANCHESTER	1	April	24	27	3	▲
		May	37	21	-16	▼
		June	30	32	2	▲
Summary of MANCHESTER			91	80	-11	▼
OLDHAM	1	April	10	9	-1	▼
		May	8	6	-2	▼
		June	11	5	-6	▼
Summary of OLDHAM			29	20	-9	▼
ROCHDALE	1	April	11	7	-4	▼
		May	11	8	-3	▼
		June	12	12	0	◀▶
Summary of ROCHDALE			34	27	-7	▼
SALFORD	1	April	16	7	-9	▼
		May	18	11	-7	▼
		June	14	16	2	▲
Summary of SALFORD			48	34	-14	▼
STOCKPORT	1	April	11	12	1	▲
		May	8	10	2	▲
		June	4	11	7	▲
Summary of STOCKPORT			23	33	10	▲
TAMESIDE	1	April	13	8	-5	▼
		May	2	4	2	▲
		June	9	4	-5	▼
Summary of TAMESIDE			24	16	-8	▼
TRAFFORD	1	April	2	8	6	▲
		May	4	5	1	▲
		June	4	9	5	▲
Summary of TRAFFORD			10	22	12	▲
WIGAN	1	April	7	12	5	▲
		May	7	11	4	▲
		June	13	8	-5	▼
Summary of WIGAN			27	31	4	▲
Grand Total			347	315	-32	▼



Prevention

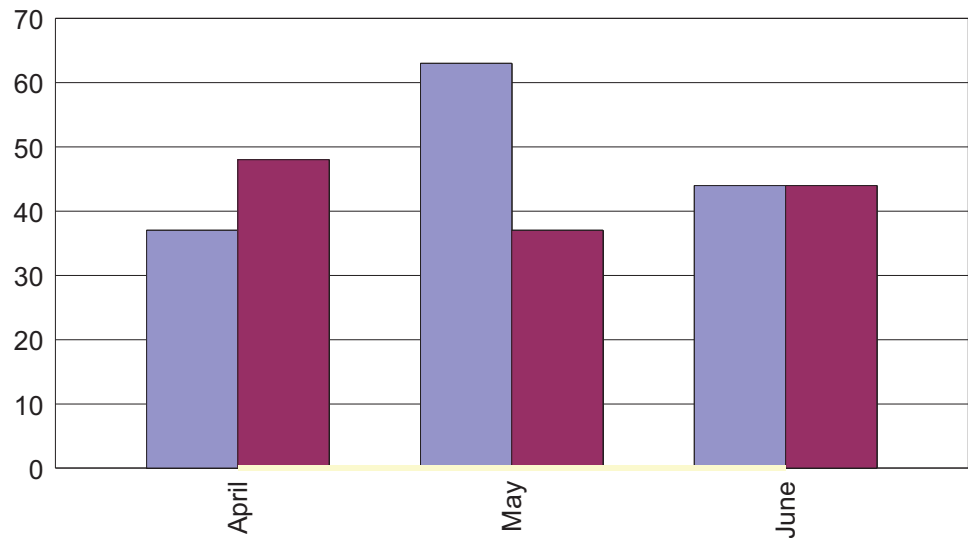
1.8 Smoke Alarms - Fitted and did not Activate

The number fires attended in dwellings where a smoke alarms was fitted and did not activate.

From April 2011 to 30th June 2011

Month	Prev Yr To Date	Curr Yr To Date	Difference to Previous Yr	Direction
April	37	48	11	▼
May	63	37	-26	▲
June	44	44	0	◀▶
Grand Total	144	129	-15	▲

■ Previous Year
■ Current Year
■ Current Yr Target



Comments

Continuation of HFRA strategy but more targeted within vulnerable localities. Watch Officers assess each incident on its merit and will look at the alarm and any issue that can be rectified.



Prevention

1.8 Smoke Alarms - Fitted and did not Activate

From April 2011 to 30th June 2011

Borough	Qtr	Month	Prev Yr To Date	Curr Yr To Date	Difference to Previous Yr	Direction
BOLTON	1	April	4	12	8	▼
		May	18	4	-14	▲
		June	7	4	-3	▲
Summary of BOLTON			29	20	-9	▲
BURY	1	April	1	1	0	◀▶
		May	2	4	2	▼
		June	1	4	3	▼
Summary of BURY			4	9	5	▼
MANCHESTER	1	April	8	14	6	▼
		May	12	11	-1	▲
		June	8	13	5	▼
Summary of MANCHESTER			28	38	10	▼
OLDHAM	1	April	2	3	1	▼
		May	3	1	-2	▲
		June	0	1	1	▼
Summary of OLDHAM			5	5	0	◀▶
ROCHDALE	1	April	8	2	-6	▲
		May	3	3	0	◀▶
		June	3	3	0	◀▶
Summary of ROCHDALE			14	8	-6	▲
SALFORD	1	April	4	4	0	◀▶
		May	6	2	-4	▲
		June	4	4	0	◀▶
Summary of SALFORD			14	10	-4	▲
STOCKPORT	1	April	3	4	1	▼
		May	6	3	-3	▲
		June	9	5	-4	▲
Summary of STOCKPORT			18	12	-6	▲
TAMESIDE	1	April	2	2	0	◀▶
		May	7	2	-5	▲
		June	4	2	-2	▲
Summary of TAMESIDE			13	6	-7	▲
TRAFFORD	1	April	1	2	1	▼
		May	2	1	-1	▲
		June	3	5	2	▼
Summary of TRAFFORD			6	8	2	▼
WIGAN	1	April	4	4	0	◀▶
		May	4	6	2	▼
		June	5	3	-2	▲
Summary of WIGAN			13	13	0	◀▶
Grand Total			144	129	-15	▲



Prevention

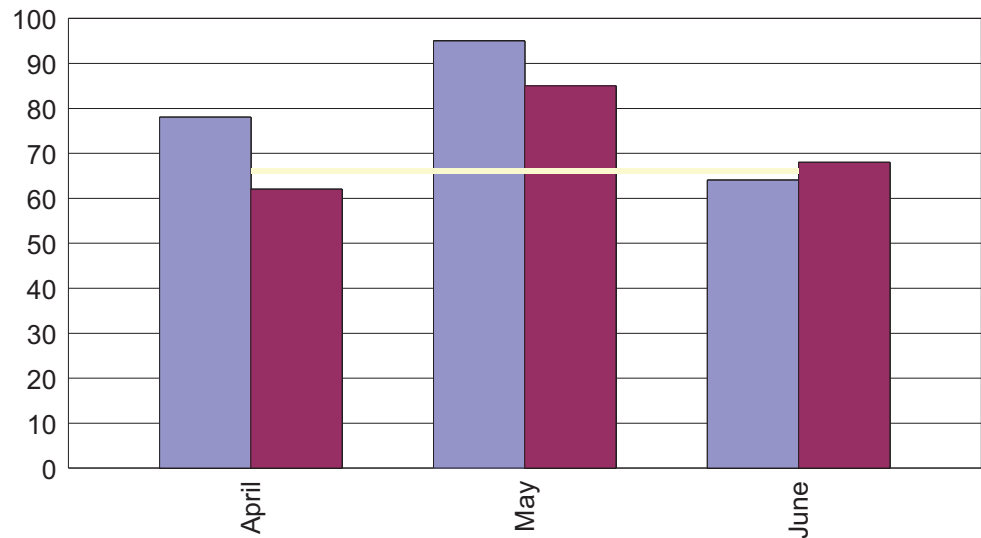
1.9 Smoke Alarms - Not Fitted

The number fires attended in dwellings where no smoke alarm was fitted.

From April 2011 to 30th June 2011

Month	Prev Yr To Date	Curr Yr To Date	Difference to Previous Yr	Target	Difference to Target	% of Target Achieved	Direction
April	78	62	-16	66	-4	106.45%	▲
May	95	85	-10	66	19	77.65%	▲
June	64	68	4	66	2	97.06%	▼
Grand Total	237	215	-22	198	17	92.09%	▲

■ Previous Year
■ Current Year
■ Current Yr Target



Comments

Continuation of HFRA strategy but more targeted within vulnerable localities. Watch Officers assess each incident on its merit and will look at the alarm and any issue that can be rectified.



Prevention

1.9 Smoke Alarms - Not Fitted

From April 2011 to 30th June 2011

Borough	Qtr	Month	Prev Yr To Date	Curr Yr To Date	Difference to Previous Yr	Target	Difference to Target	% of Target Achieved	Direction
BOLTON	1	April	10	4	-6	8	-4	200.00%	▲
		May	18	5	-13	8	-3	160.00%	▲
		June	1	9	8	8	1	88.89%	▼
Summary of BOLTON			29	18	-11	24	-6	133.33%	▲
BURY	1	April	2	6	4	4	2	66.67%	▼
		May	9	5	-4	4	1	80.00%	▲
		June	5	3	-2	4	-1	133.33%	▲
Summary of BURY			16	14	-2	12	2	85.71%	▲
MANCHESTER	1	April	12	8	-4	14	-6	175.00%	▲
		May	21	27	6	14	13	51.85%	▼
		June	17	18	1	14	4	77.78%	▼
Summary of MANCHESTER			50	53	3	42	11	79.25%	▼
OLDHAM	1	April	16	10	-6	9	1	90.00%	▲
		May	6	10	4	9	1	90.00%	▲
		June	11	6	-5	9	-3	150.00%	▲
Summary of OLDHAM			33	26	-7	27	-1	103.85%	▲
ROCHDALE	1	April	7	6	-1	5	1	83.33%	▲
		May	5	7	2	5	2	71.43%	▲
		June	7	6	-1	5	1	83.33%	▲
Summary of ROCHDALE			19	19	0	15	4	78.95%	▲
SALFORD	1	April	10	8	-2	7	1	87.50%	▲
		May	7	9	2	7	2	77.78%	▲
		June	9	5	-4	7	-2	140.00%	▲
Summary of SALFORD			26	22	-4	21	1	95.45%	▲
STOCKPORT	1	April	6	5	-1	4	1	80.00%	▲
		May	5	5	0	4	1	80.00%	▲
		June	2	4	2	4	0	100.00%	▲
Summary of STOCKPORT			13	14	1	12	2	85.71%	▲
TAMESIDE	1	April	2	5	3	4	1	80.00%	▼
		May	7	5	-2	4	1	80.00%	▲
		June	4	5	1	4	1	80.00%	▼
Summary of TAMESIDE			13	15	2	12	3	80.00%	▼
TRAFFORD	1	April	5	4	-1	4	0	100.00%	▲
		May	5	2	-3	4	-2	200.00%	▲
		June	3	2	-1	4	-2	200.00%	▲
Summary of TRAFFORD			13	8	-5	12	-4	150.00%	▲
WIGAN	1	April	8	6	-2	7	-1	116.67%	▲
		May	12	10	-2	7	3	70.00%	▲
		June	5	10	5	7	3	70.00%	▼
Summary of WIGAN			25	26	1	21	5	80.77%	▼
Grand Total			237	215	-22	198	17	92.09%	▲



Prevention

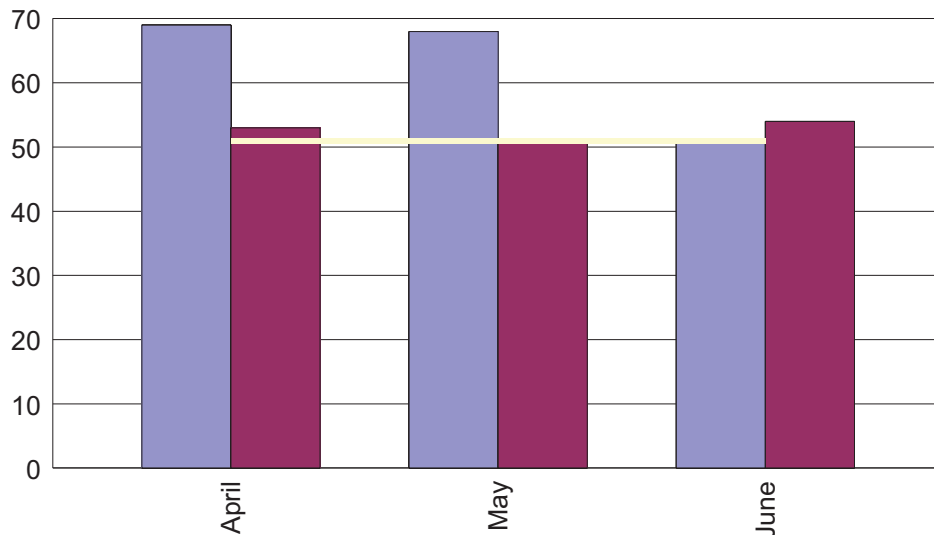
2.0 Malicious Calls - Attended

The number of incidents where a malicious call has been made with the intention of getting the FRS to attend a non-existent incident.

From April 2011 to 30th June 2011

Month	Prev Yr To Date	Curr Yr To Date	Difference to Previous Yr	Target	Difference to Target	% of Target Achieved	Direction
April	69	53	-16	51	2	96.23%	▲
May	68	51	-17	51	0	100.00%	▲
June	51	54	3	51	3	94.44%	▼
Grand Total	188	158	-30	153	5	96.84%	▲

■ Previous Year
■ Current Year
■ Current Yr Target



Comments

Continue with programme of school visits and involvement in SNAPS. Liaison with Community Safety Partnership when necessary. Continue to improve the call challenge process and relationship with prosecutions for malicious calls when appropriate. CCTV at the Trafford centre led to two males being apprehended for one call.



Prevention

2.0. Malicious Calls - Attended

From April 2011 to 30th June 2011

Borough	Qtr	Month	Prev Yr To Date	Curr Yr To Date	Difference to Previous Yr	Target	Difference to Target	% of Target Achieved	Direction
BOLTON	1	April	7	5	-2	6	-1	120.00%	▲
		May	12	7	-5	6	1	85.71%	▲
		June	4	4	0	6	-2	150.00%	◀▶
Summary of BOLTON			23	16	-7	18	-2	112.50%	▲
BURY	1	April	3	6	3	2	4	33.33%	▼
		May	3	1	-2	2	-1	200.00%	▲
		June	1	3	2	2	1	66.67%	▼
Summary of BURY			7	10	3	6	4	60.00%	▼
MANCHESTER	1	April	13	6	-7	11	-5	183.33%	▲
		May	16	7	-9	11	-4	157.14%	▲
		June	12	16	4	11	5	68.75%	▼
Summary of MANCHESTER			41	29	-12	33	-4	113.79%	▲
OLDHAM	1	April	7	8	1	7	1	87.50%	▼
		May	8	3	-5	7	-4	233.33%	▲
		June	10	3	-7	7	-4	233.33%	▲
Summary of OLDHAM			25	14	-11	21	-7	150.00%	▲
ROCHDALE	1	April	16	9	-7	9	0	100.00%	▲
		May	12	8	-4	9	-1	112.50%	▲
		June	6	12	6	9	3	75.00%	▼
Summary of ROCHDALE			34	29	-5	27	2	93.10%	▲
SALFORD	1	April	2	6	4	4	2	66.67%	▼
		May	6	7	1	4	3	57.14%	▼
		June	5	4	-1	4	0	100.00%	▲
Summary of SALFORD			13	17	4	12	5	70.59%	▼
STOCKPORT	1	April	5	4	-1	4	0	100.00%	▲
		May	4	5	1	4	1	80.00%	▼
		June	5	1	-4	4	-3	400.00%	▲
Summary of STOCKPORT			14	10	-4	12	-2	120.00%	▲
TAMESIDE	1	April	6	4	-2	3	1	75.00%	▲
		May	3	4	1	3	1	75.00%	▼
		June	3	2	-1	3	-1	150.00%	▲
Summary of TAMESIDE			12	10	-2	9	1	90.00%	▲
TRAFFORD	1	April	0	2	2	1	1	50.00%	▼
		May	1	3	2	1	2	33.33%	▼
		June	3	3	0	1	2	33.33%	◀▶
Summary of TRAFFORD			4	8	4	3	5	37.50%	▼
WIGAN	1	April	10	3	-7	4	-1	133.33%	▲
		May	3	6	3	4	2	66.67%	▼
		June	2	6	4	4	2	66.67%	▼
Summary of WIGAN			15	15	0	12	3	80.00%	◀▶
Grand Total			188	158	-30	153	5	96.84%	▲



Prevention

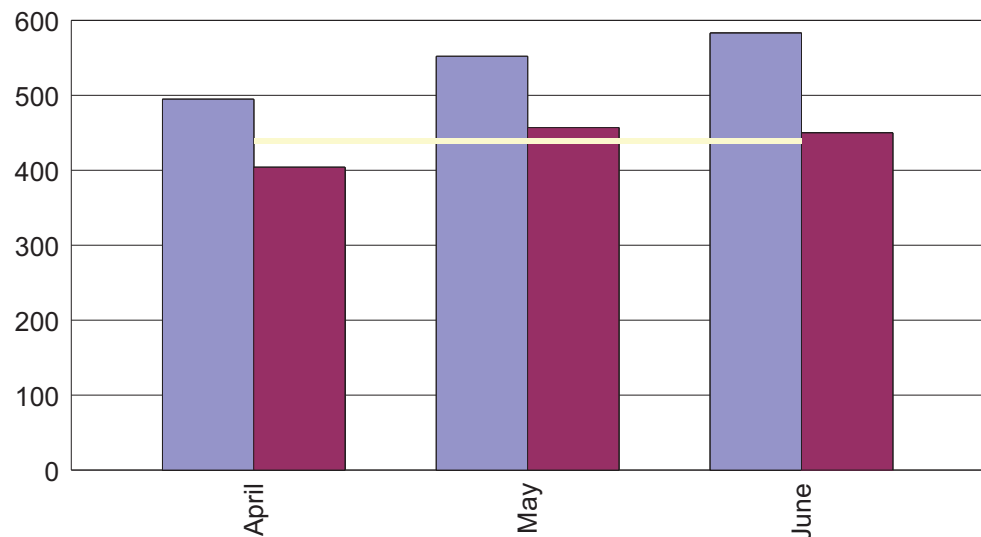
2.1 Unwanted Fire Signals

The number of calls to false alarms where the alarm has been initiated by automatic fire detection equipment in commercial premises.

From April 2011 to 30th June 2011

Month	Prev Yr To Date	Curr Yr To Date	Difference to Previous Yr	Target	Difference to Target	% of Target Achieved	Direction
April	495	404	-91	439	-35	108.66%	▲
May	552	457	-95	439	18	96.06%	▲
June	583	450	-133	439	11	97.56%	▲
Grand Total	1630	1311	-319	1317	-6	100.46%	▲

■ Previous Year
■ Current Year
■ Current Yr Target



Comments

More effective application of TVO procedure by crews and closer monitoring of repeat offenders by Fire Prevention Team for Q2. Some success via the FS department particularly in the hospitals which show significant improvement over recent years. Meeting with Partners to make businesses and LA premises aware. WM are now fully aware of their duties in respect of reducing UWFS and there is a station reference to monitor performance.



Prevention

2.1 Unwanted Fire Signals

From April 2011 to 30th June 2011

Borough	Qtr	Month	Prev Yr To Date	Curr Yr To Date	Difference to Previous Yr	Target	Difference to Target	% of Target Achieved	Direction
BOLTON	1	April	47	36	-11	34	2	94.44%	▲
		May	49	46	-3	34	12	73.91%	▲
		June	29	38	9	34	4	89.47%	▼
Summary of BOLTON			125	120	-5	102	18	85.00%	▲
BURY	1	April	31	28	-3	26	2	92.86%	▲
		May	39	29	-10	26	3	89.66%	▲
		June	38	26	-12	26	0	100.00%	▲
Summary of BURY			108	83	-25	78	5	93.98%	▲
MANCHESTER	1	April	166	130	-36	144	-14	110.77%	▲
		May	170	149	-21	144	5	96.64%	▲
		June	195	140	-55	144	-4	102.86%	▲
Summary of MANCHESTER			531	419	-112	432	-13	103.10%	▲
OLDHAM	1	April	30	34	4	28	6	82.35%	▼
		May	36	25	-11	28	-3	112.00%	▲
		June	36	39	3	28	11	71.79%	▼
Summary of OLDHAM			102	98	-4	84	14	85.71%	▲
ROCHDALE	1	April	31	20	-11	27	-7	135.00%	▲
		May	36	30	-6	27	3	90.00%	▲
		June	32	13	-19	27	-14	207.69%	▲
Summary of ROCHDALE			99	63	-36	81	-18	128.57%	▲
SALFORD	1	April	44	38	-6	41	-3	107.89%	▲
		May	52	32	-20	41	-9	128.13%	▲
		June	56	38	-18	41	-3	107.89%	▲
Summary of SALFORD			152	108	-44	123	-15	113.89%	▲
STOCKPORT	1	April	29	27	-2	27	0	100.00%	▲
		May	27	43	16	27	16	62.79%	▼
		June	43	39	-4	27	12	69.23%	▲
Summary of STOCKPORT			99	109	10	81	28	74.31%	▼
TAMESIDE	1	April	37	28	-9	38	-10	135.71%	▲
		May	42	26	-16	38	-12	146.15%	▲
		June	60	37	-23	38	-1	102.70%	▲
Summary of TAMESIDE			139	91	-48	114	-23	125.27%	▲
TRAFFORD	1	April	36	31	-5	31	0	100.00%	▲
		May	39	39	0	31	8	79.49%	▲
		June	40	36	-4	31	5	86.11%	▲
Summary of TRAFFORD			115	106	-9	93	13	87.74%	▲
WIGAN	1	April	44	32	-12	43	-11	134.38%	▲
		May	62	38	-24	43	-5	113.16%	▲
		June	54	44	-10	43	1	97.73%	▲
Summary of WIGAN			160	114	-46	129	-15	113.16%	▲
Grand Total			1630	1311	-319	1317	-6	100.46%	▲



Protection

2.2 Number of Fire Safety Enforcement Inspections

This target is set based on a full establishment of 56 inspecting officers. The inspecting officer availability during quarter 1 was 36, due to 5 posts being ring fenced for other forms of protection activity, establishment vacancies, annual leave and sickness. Against availability the expected output for the quarter should have been 1620 audits. The actual output of 2064 significantly exceeds this expectation and is a big improvement on output from last year.

Data is from April 2011 to 30th June 2011

Area	Borough	Number of FPOs	Number of RIs	Number of Audits	Total Annual Target	Target to Date	Total Number of Inspections
Bolton and Wigan	BOLTON	4	81	51	720	180	132
	WIGAN	5	124	136	900	225	261
Summary of Bolton and Wigan		9	205	187	1620	405	393
Bury, Oldham & Rochdale	BURY	3	35	100	540	135	135
	OLDHAM	4	49	112	720	180	161
	ROCHDALE	4	50	59	720	180	109
Summary of Bury, Oldham & Rochdale		11	134	271	1980	495	405
Manchester	MANCHESTER	14	134	231	2520	630	365
Summary of Manchester		14	134	231	2520	630	365
Salford & Trafford	SALFORD	5	136	195	900	225	331
	TRAFFORD	5	42	165	900	225	207
Summary of Salford & Trafford		10	178	360	1800	450	538
Stockport & Tameside	STOCKPORT	4	119	96	720	180	215
	TAMESIDE	3	62	85	540	135	148
Summary of Stockport & Tameside		7	181	181	1260	315	363
Grand Total		51	832	1230	9180	2295	2064



Response

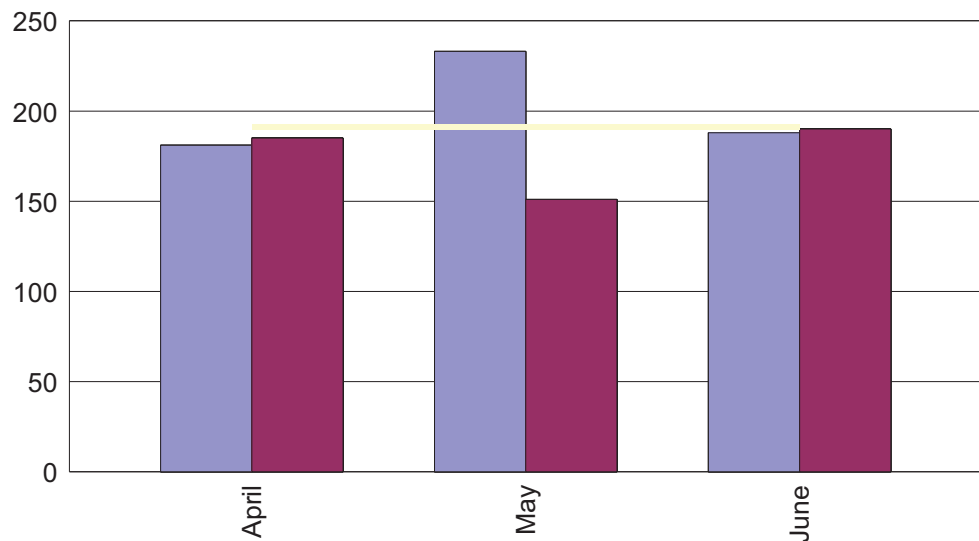
2.3 Accidental Dwelling Fires

The number of fires in dwellings where the cause was recorded as 'Accidental', or 'Not known'.

From April 2011 to 30th June 2011

Month	Prev Yr To Date	Curr Yr To Date	Difference to Previous Yr	Target	Difference to Target	% of Target Achieved	Direction
April	181	185	4	191	-6	103.24%	▼
May	233	151	-82	191	-40	126.49%	▲
June	188	190	2	191	-1	100.53%	▼
Grand Total	602	526	-76	573	-47	108.94%	▲

■ Previous Year
■ Current Year
■ Current Yr Target



Comments

Extremely positive reduction in all boroughs with some seeing over 30% reduction. Examples of the work initiatives being used include: Salford SNAPS (multi agency approach to tackling community issues in a rolling programme addressing each ward in the borough) have been helpful in accessing areas. Leigh 'Street a week' or 'Street a month' whereby the Police identify a persistently offending street for burglary and car crime and initiate a targeted response. An over laying exercise has shown that those same streets are our issues for Acc. Dwellings and although these streets have been targeted with HFRAs in the past it has had little effect due to occupiers not being interested or language barriers. This will be addressed by this joint initiative with the Police.



Response

2.3 Accidental Dwelling Fires

From April 2011 to 30th June 2011

Borough	Qtr	Month	Prev Yr To Date	Curr Yr To Date	Difference to Previous Yr	Target	Difference to Target	% of Target Achieved	Direction
BOLTON	1	April	13	27	14	24	3	88.89%	▼
		May	46	13	-33	24	-11	184.62%	▲
		June	16	25	9	24	1	96.00%	▼
Summary of BOLTON			75	65	-10	72	-7	110.77%	▲
BURY	1	April	12	12	0	13	-1	108.33%	◀▶
		May	18	8	-10	13	-5	162.50%	▲
		June	13	6	-7	13	-7	216.67%	▲
Summary of BURY			43	26	-17	39	-13	150.00%	▲
MANCHESTER	1	April	40	39	-1	45	-6	115.38%	▲
		May	56	41	-15	45	-4	109.76%	▲
		June	45	57	12	45	12	78.95%	▼
Summary of MANCHESTER			141	137	-4	135	2	98.54%	▲
OLDHAM	1	April	17	16	-1	14	2	87.50%	▲
		May	13	12	-1	14	-2	116.67%	▲
		June	15	9	-6	14	-5	155.56%	▲
Summary of OLDHAM			45	37	-8	42	-5	113.51%	▲
ROCHDALE	1	April	23	13	-10	19	-6	146.15%	▲
		May	16	12	-4	19	-7	158.33%	▲
		June	20	18	-2	19	-1	105.56%	▲
Summary of ROCHDALE			59	43	-16	57	-14	132.56%	▲
SALFORD	1	April	25	15	-10	24	-9	160.00%	▲
		May	29	18	-11	24	-6	133.33%	▲
		June	21	21	0	24	-3	114.29%	◀▶
Summary of SALFORD			75	54	-21	72	-18	133.33%	▲
STOCKPORT	1	April	16	21	5	14	7	66.67%	▼
		May	15	16	1	14	2	87.50%	▼
		June	14	17	3	14	3	82.35%	▼
Summary of STOCKPORT			45	54	9	42	12	77.78%	▼
TAMESIDE	1	April	14	12	-2	14	-2	116.67%	▲
		May	12	7	-5	14	-7	200.00%	▲
		June	17	9	-8	14	-5	155.56%	▲
Summary of TAMESIDE			43	28	-15	42	-14	150.00%	▲
TRAFFORD	1	April	6	13	7	8	5	61.54%	▼
		May	10	7	-3	8	-1	114.29%	▲
		June	9	16	7	8	8	50.00%	▼
Summary of TRAFFORD			25	36	11	24	12	66.67%	▼
WIGAN	1	April	15	17	2	16	1	94.12%	▼
		May	18	17	-1	16	1	94.12%	▲
		June	18	12	-6	16	-4	133.33%	▲
Summary of WIGAN			51	46	-5	48	-2	104.35%	▲
Grand Total			602	526	-76	573	-47	108.94%	▲



Response

2.4 Confined to the Room of Origin

The number and percentage of accidental fires in Dwellings were confined to the room of origin.

Data from April 2011 to 30th June 2011

Qtr	Month	Number of Incidents	Number Confined to Room of Origin	% Confined to Room of Origin
1	April	185	171	92%
	May	151	142	94%
	June	190	179	94%
		526	492	94%

Comments

The overall figure of 94% in Q1 2011/12 against a figure of 93% for Q4 2011/12, indicates that the actions undertaken since Q4 2011/12 are showing signs of success. The actions taken include: The introduction of exceptions reports for this target which is assisting SMs in the monitoring of this target. Boroughs being sent 'exception reports' identifying those incidents that are not confined to room of origin. Each incident that is not 'confined to room of origin' is reviewed by SM to ensure accuracy of records, and the incident commanders are advised as to the accurate method of recording incidents. It is recognised that whilst we have successes such as Stockport 98% and Manchester 96.18%, there is still more to do, but it should also be noted that the differential between target and achievement is sometimes as little as 4 incidents.



Response

2.4 Confined to Room of Origin

Data from April 2011 to 30th June 2011

Borough	Qtr	Month	Number of Incidents	Number Confined to Room of Origin	% Confined to Room of Origin
BOLTON	1	April	27	25	93%
		May	13	12	92%
		June	25	22	88%
Summary of BOLTON			65	59	91%
BURY	1	April	12	10	83%
		May	8	8	100%
		June	6	6	100%
Summary of BURY			26	24	92%
MANCHESTER	1	April	39	38	97%
		May	41	38	93%
		June	57	54	95%
Summary of MANCHESTER			137	130	95%
OLDHAM	1	April	16	15	94%
		May	12	11	92%
		June	9	9	100%
Summary of OLDHAM			37	35	95%
ROCHDALE	1	April	13	11	85%
		May	12	12	100%
		June	18	17	94%
Summary of ROCHDALE			43	40	93%
SALFORD	1	April	15	12	80%
		May	18	17	94%
		June	21	21	100%
Summary of SALFORD			54	50	93%
STOCKPORT	1	April	21	21	100%
		May	16	15	94%
		June	17	16	94%
Summary of STOCKPORT			54	52	96%
TAMESIDE	1	April	12	11	92%
		May	7	6	86%
		June	9	8	89%
Summary of TAMESIDE			28	25	89%
TRAFFORD	1	April	13	12	92%
		May	7	7	100%
		June	16	14	88%
Summary of TRAFFORD			36	33	92%
WIGAN	1	April	17	16	94%
		May	17	16	94%
		June	12	12	100%
Summary of WIGAN			46	44	96%
Grand Total			526	492	94%



Response

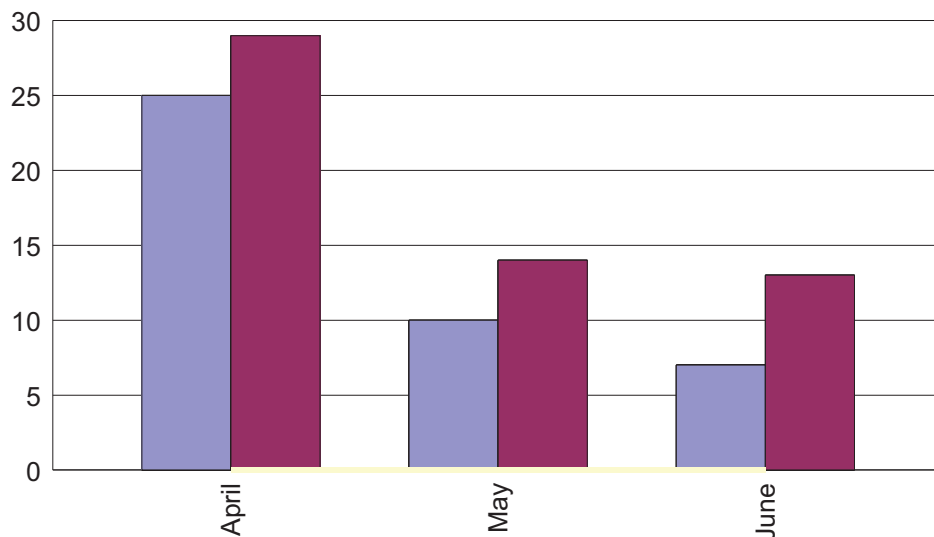
2.5 Rescues

The number of people rescued from fires.

From April 2011 to 30th June 2011

Month	Prev Yr To Date	Curr Yr To Date	Difference to Previous Yr	Direction
April	25	29	4	▼
May	10	14	4	▼
June	7	13	6	▼
Grand Total	42	56	14	▼

■ Previous Year
■ Current Year
■ Current Yr Target



Comments

The low number rescues indicate that the HFRA Escape plan is pitched at appropriate level and community understands information in relation to escape plan. This indicator is regularly reviewed as part of the Borough Command process and further analysis will be undertaken by the Corporate Planning and Performance Department.



Response

2.5 Rescues

From April 2011 to 30th June 2011

Borough	Qtr	Month	Prev Yr To Date	Curr Yr To Date	Difference to Previous Yr	Direction
BOLTON	1	April	3	1	-2	▲
		May	2	3	1	▼
		June	0	2	2	▼
Summary of BOLTON			5	6	1	▼
BURY	1	April	2	1	-1	▲
		May	0	0	0	◀▶
		June	0	1	1	▼
Summary of BURY			2	2	0	◀▶
MANCHESTER	1	April	4	6	2	▼
		May	2	1	-1	▲
		June	0	2	2	▼
Summary of MANCHESTER			6	9	3	▼
OLDHAM	1	April	1	3	2	▼
		May	0	2	2	▼
		June	1	0	-1	▲
Summary of OLDHAM			2	5	3	▼
ROCHDALE	1	April	3	10	7	▼
		May	0	1	1	▼
		June	0	2	2	▼
Summary of ROCHDALE			3	13	10	▼
SALFORD	1	April	2	3	1	▼
		May	2	2	0	◀▶
		June	3	0	-3	▲
Summary of SALFORD			7	5	-2	▲
STOCKPORT	1	April	2	2	0	◀▶
		May	4	0	-4	▲
		June	1	2	1	▼
Summary of STOCKPORT			7	4	-3	▲
TAMESIDE	1	April	5	1	-4	▲
		May	0	0	0	◀▶
		June	0	2	2	▼
Summary of TAMESIDE			5	3	-2	▲
TRAFFORD	1	April	0	1	1	▼
		May	0	2	2	▼
		June	0	1	1	▼
Summary of TRAFFORD			0	4	4	▼
WIGAN	1	April	3	1	-2	▲
		May	0	3	3	▼
		June	2	1	-1	▲
Summary of WIGAN			5	5	0	◀▶
Grand Total			42	56	14	▼



Response

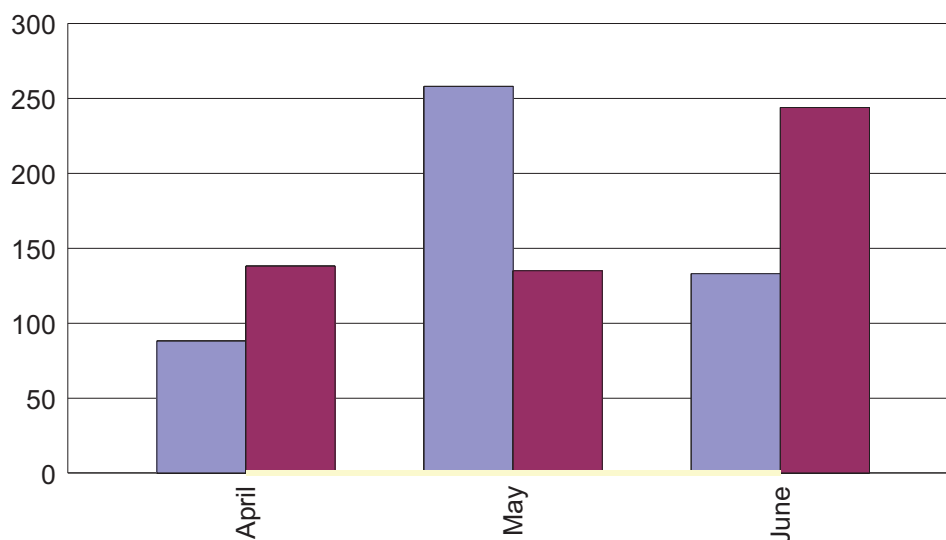
2.6 Escapes Unassisted

The number of people in accidental dwelling fires who escaped unharmed without FRS assistance.

From April 2011 to 30th June 2011

Month	Prev Yr To Date	Curr Yr To Date	Difference to Previous Yr	Direction
April	88	138	50	▼
May	258	135	-123	▲
June	133	244	111	▼
Grand Total	479	517	38	▼

■ Previous Year
■ Current Year
■ Current Yr Target



Comments

Due to the significant reduction of dwelling fires, it is accepted that there should also be significantly fewer escapes. Therefore, this is a positive outcome which indicates that HFRA Escape plan is pitched at appropriate level & community understands information in relation to escape plan. However, still a reflection of the number of incidents reported to FS – continue reduction initiatives.



Response

2.6 Escapes Unassisted

From April 2011 to 30th June 2011

Borough	Qtr	Month	Prev Yr To Date	Curr Yr To Date	Difference to Previous Yr	Direction
BOLTON	1	April	9	12	3	▼
		May	21	7	-14	▲
		June	0	12	12	▼
Summary of BOLTON			30	31	1	▼
BURY	1	April	4	14	10	▼
		May	21	3	-18	▲
		June	1	4	3	▼
Summary of BURY			26	21	-5	▲
MANCHESTER	1	April	21	44	23	▼
		May	39	34	-5	▲
		June	48	33	-15	▲
Summary of MANCHESTER			108	111	3	▼
OLDHAM	1	April	0	4	4	▼
		May	8	28	20	▼
		June	11	2	-9	▲
Summary of OLDHAM			19	34	15	▼
ROCHDALE	1	April	3	5	2	▼
		May	12	15	3	▼
		June	4	1	-3	▲
Summary of ROCHDALE			19	21	2	▼
SALFORD	1	April	17	3	-14	▲
		May	115	2	-113	▲
		June	11	33	22	▼
Summary of SALFORD			143	38	-105	▲
STOCKPORT	1	April	18	25	7	▼
		May	19	7	-12	▲
		June	27	42	15	▼
Summary of STOCKPORT			64	74	10	▼
TAMESIDE	1	April	12	6	-6	▲
		May	9	23	14	▼
		June	15	106	91	▼
Summary of TAMESIDE			36	135	99	▼
TRAFFORD	1	April	1	13	12	▼
		May	2	3	1	▼
		June	5	7	2	▼
Summary of TRAFFORD			8	23	15	▼
WIGAN	1	April	3	12	9	▼
		May	12	13	1	▼
		June	11	4	-7	▲
Summary of WIGAN			26	29	3	▼
Grand Total			479	517	38	▼



Response

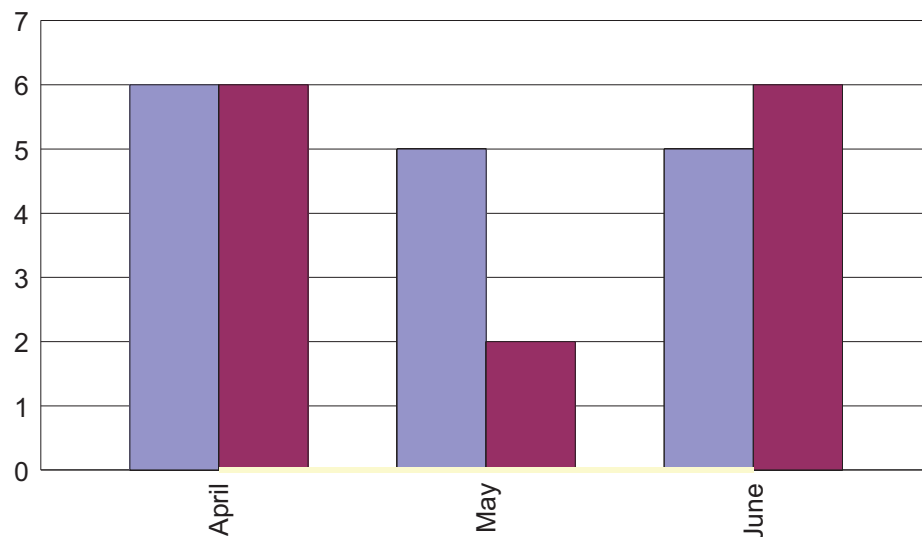
2.7 Firefighters Hostilities

The number of hostilities towards firefighters.

From April 2011 to 30th June 2011

Month	Prev Yr To Date	Curr Yr To Date	Difference to Previous Yr	Direction
April	6	6	0	◀▶
May	5	2	-3	▲
June	5	6	1	▼
Grand Total	16	14	-2	▲

■ Previous Year
■ Current Year
■ Current Yr Target



Comments

Continue to improve relationships via youth initiatives and support of partners working with young people and report to GMP and deal with as appropriate. Firefly courses to be delivered over the next 24 mths. Targeting areas which have potential for deliberate secondary fires and hostility.



Response

2.7 Firefighter Hostilities

From April 2011 to 30th June 2011

Borough	Qtr	Month	Prev Yr To Date	Curr Yr To Date	Difference to Previous Yr	Direction
BOLTON	1	April	1	1	0	↔
		May	1	0	-1	▲
		June	0	0	0	↔
Summary of BOLTON			2	1	-1	▲
BURY	1	April	0	0	0	↔
		May	0	0	0	↔
		June	0	0	0	↔
Summary of BURY			0	0	0	↔
MANCHESTER	1	April	0	3	3	▼
		May	1	0	-1	▲
		June	0	0	0	↔
Summary of MANCHESTER			1	3	2	▼
OLDHAM	1	April	2	0	-2	▲
		May	0	1	1	▼
		June	2	1	-1	▲
Summary of OLDHAM			4	2	-2	▲
ROCHDALE	1	April	0	0	0	↔
		May	1	0	-1	▲
		June	0	2	2	▼
Summary of ROCHDALE			1	2	1	▼
SALFORD	1	April	0	0	0	↔
		May	0	0	0	↔
		June	3	0	-3	▲
Summary of SALFORD			3	0	-3	▲
STOCKPORT	1	April	0	1	1	▼
		May	2	0	-2	▲
		June	0	1	1	▼
Summary of STOCKPORT			2	2	0	↔
TAMESIDE	1	April	1	0	-1	▲
		May	0	0	0	↔
		June	0	0	0	↔
Summary of TAMESIDE			1	0	-1	▲
TRAFFORD	1	April	1	0	-1	▲
		May	0	1	1	▼
		June	0	0	0	↔
Summary of TRAFFORD			1	1	0	↔
WIGAN	1	April	1	1	0	↔
		May	0	0	0	↔
		June	0	2	2	▼
Summary of WIGAN			1	3	2	▼
Grand Total			16	14	-2	▲

Response

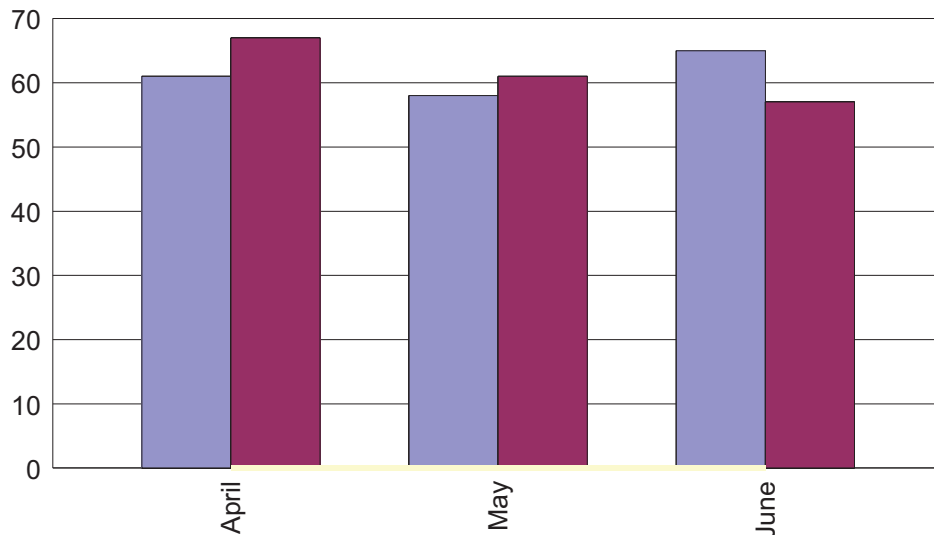
2.8 RTCs

The number of calls to road traffic collisions.

From April 2011 to 30th June 2011

Month	Prev Yr To Date	Curr Yr To Date	Difference to Previous Yr	Direction
April	61	67	6	▼
May	58	61	3	▼
June	65	57	-8	▲
Grand Total	184	185	1	▼

■ Previous Year
■ Current Year
■ Current Yr Target



Comments

Continue 'Consequences' work with youth organisations, Seatbelt/Mobile Phone safety initiatives such as Bury Road Casualty Reduction Group (BCRCG). Trafford Borough has had a successful bid with Trafford council (£3500) to provide a mobile RTC display. This involves a car that has been involved in a fatal RTC with sound track produced by Manchester college, and story boards mounted onto a trailer. This will be used to enhance any road safety work delivered by the Borough. Also, in Tameside, the expansion of RTC prevention courses continue with delivery from Stalybridge and to be expanded to Hyde fire stations.



Response

2.8 RTCs

From April 2011 to 30th June 2011

Borough	Qtr	Month	Prev Yr To Date	Curr Yr To Date	Difference to Previous Yr	Direction
BOLTON	1	April	2	3	1	▼
		May	11	4	-7	▲
		June	9	10	1	▼
Summary of BOLTON			22	17	-5	▲
BURY	1	April	3	4	1	▼
		May	7	3	-4	▲
		June	6	5	-1	▲
Summary of BURY			16	12	-4	▲
MANCHESTER	1	April	14	19	5	▼
		May	12	9	-3	▲
		June	13	10	-3	▲
Summary of MANCHESTER			39	38	-1	▲
OLDHAM	1	April	5	4	-1	▲
		May	4	7	3	▼
		June	5	4	-1	▲
Summary of OLDHAM			14	15	1	▼
ROCHDALE	1	April	3	8	5	▼
		May	4	8	4	▼
		June	8	0	-8	▲
Summary of ROCHDALE			15	16	1	▼
SALFORD	1	April	13	7	-6	▲
		May	6	12	6	▼
		June	4	4	0	◀▶
Summary of SALFORD			23	23	0	◀▶
STOCKPORT	1	April	6	6	0	◀▶
		May	3	2	-1	▲
		June	8	7	-1	▲
Summary of STOCKPORT			17	15	-2	▲
TAMESIDE	1	April	8	4	-4	▲
		May	4	3	-1	▲
		June	6	7	1	▼
Summary of TAMESIDE			18	14	-4	▲
TRAFFORD	1	April	1	6	5	▼
		May	4	6	2	▼
		June	1	4	3	▼
Summary of TRAFFORD			6	16	10	▼
WIGAN	1	April	6	6	0	◀▶
		May	3	7	4	▼
		June	5	6	1	▼
Summary of WIGAN			14	19	5	▼
Grand Total			184	185	1	▼



Response

2.9 % of emergencies arrived at within our category response times

3.0 % of 999 calls answered within 6 seconds

3.1 % of 999 calls processed within agreed times

3.2 % of appliances turned out within agreed times

Please note management reports for these measures are under development and being tested for accuracy. Quarter 1 and 2 performance and analysis for the new measures will follow in the quarter 2.

People

3.3 Sickness - The proportion of working days/shifts lost due to sickness absence

All Staff - 5.51

Wholetime Uniformed Staff - 4.32

Non Uniformed Staff - 9.90

All staff absence due to sickness has dropped by 22% versus the previous quarter with short term sickness down by 17% versus the same quarter in the previous year. The overall absence levels however still remain higher than the same quarter last year (although below target) due to an increase in long term sickness. The two key work groups showing a notable increase in long term sickness are:

Administrative, professional, technical and clerical (APT & C): Long term sickness up 127%

Cleaning staff: Long term sickness up 106%

As percentages these figures are striking however reflect a small number of individuals. These individuals are being actively supported by line management.

The reduction in short term sickness suggests the application of the attendance management policy and absence triggers are being effectively applied.

3.4 The number of Volunteers and Volunteers Hours provided

The total number of volunteers is 203 in quarter 1 including pipe band, rotary, cadets, museum and FACE trainers. The total number of hours delivered in volunteering for quarter 1 is 5865.25 against a target of 5502.

We recruited 55 extra volunteers in May 2011 to expand the service so we have now reached target in terms of numbers. However there are always leavers so we have implemented a large scale targeted recruitment campaign in July to recruit volunteers to deliver locally agreed SLA's on Boroughs. Moving forward we are progressing new modules in health training and a smoke alarm response team. We currently have 137 applicants shortlisted and they will be interviewed over the next month to commence training in September. We also have an office move scheduled to Manchester Borough Headquarters which will be completed by October 2011.

Principles

3.5 The number of working days lost due to ill health and injuries

The first quarter return for days lost due to injury includes 43 days lost as a result of a member of staff who sustained a twisted knee as he stepped off an appliance. Of the 35 injuries sustained by our staff only 3 were RIDDOR reportable (i.e. notifiable to the HSE); none of the three were major injuries, notifiable diseases or notifiable occurrences and were only notifiable as they had resulted in more than 3 days absence from the workplace.

3.6 The Reduction in our overall carbon footprint and natural resources

Tonnes of Carbon Emmitted by Fires - All fires emit carbon dioxide and can be considered part of the indirect carbon footprint of Greater Manchester Fire Service and the communities it serves.

This indicator reflects the overall carbon dioxide emissions from all fires across the city region using a nationally adopted reporting approach and the year on year reduction reflects the reduction in both primary and secondary fires in quarter 1.

Gas - Gas data has historically been based on billed estimates. We are currently moving to automatic half-hourly metering for all sites which means more accurate data will be available for future performance updates.

Electric -Electricity Usage has reduced by more than 9% compared to Qtr 1 the previous year, exceeding our target of 5.6%.

This achievement reflects capital investment to improve electricity usage efficiency during 2010/11, including voltage optimisation at 15 of our highest energy consuming sites and upgrades projects across the estate.

Fuel - Diesel usage has reduced by more than 15.5% compared to Qtr 1 the previous year, exceeding our target of 5.6%.

This significant reduction in consumption may be attributable to a number of factors, including a reduced number of incidents, fuel efficient policies and investment in fuel efficient/energy saving technologies and driver training.